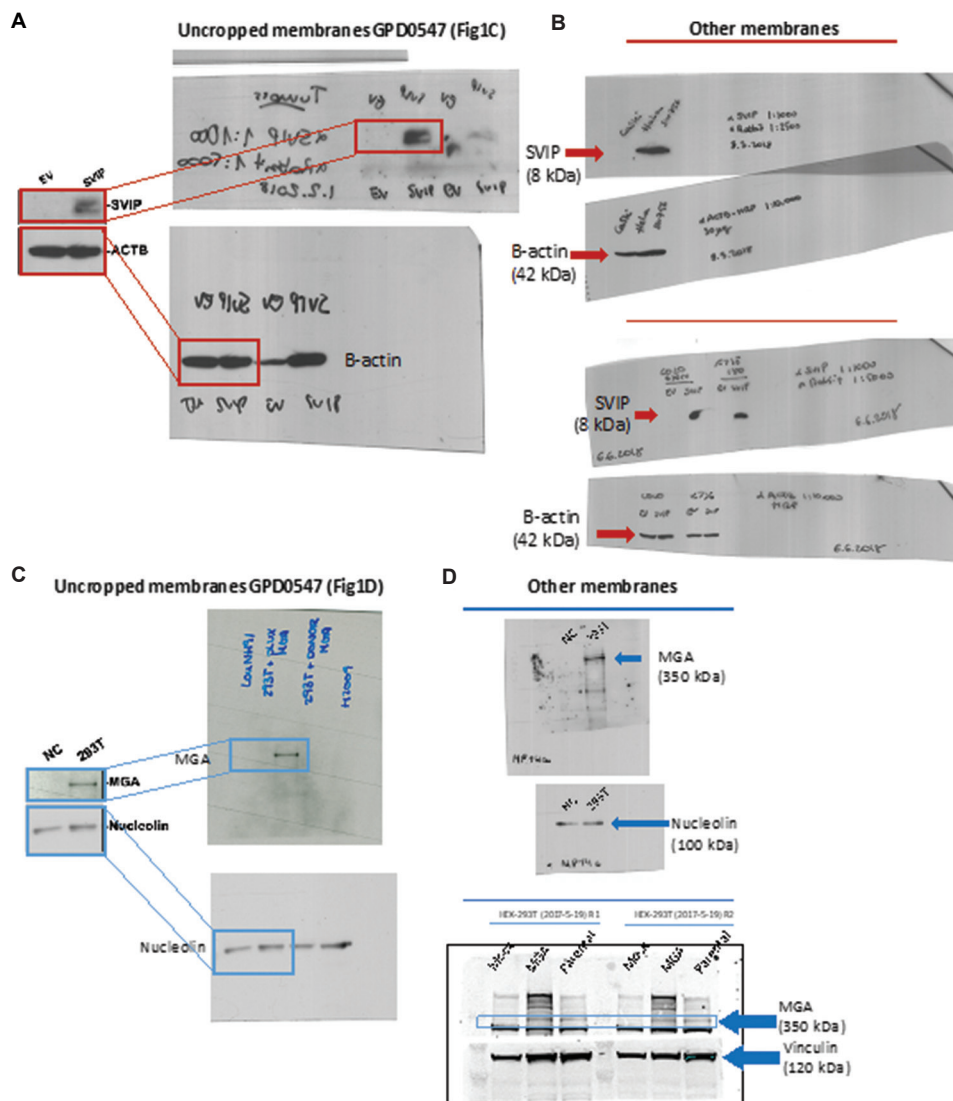


SHORT COMMUNICATION

How the West(ern) won: Solutions for immunoblotting large and small proteins

Supplementary File

Raw WB image



**Figure R1.** Original images for Western blotting for SVIP,  $\beta$ -actin, MGA, and nucleolin are in Figure 1C and 1D, respectively. (A) western blotting for SVIP (8 kDa) and  $\beta$ -actin (42 kDa) in Figure 1C; (B) western blotting for SVIP (8 kDa) and  $\beta$ -actin (42 kDa) proteins (duplicates); (C) western blotting for MGA (350 kDa) and Nucleolin (100 kDa) in Figure 1D; and (D) western blotting for MGA (350 kDa) and Nucleolin (100 kDa) proteins (duplicates). Abbreviations: SVIP Small VCP-interacting protein; MGA: MAX gene-associated protein.