

ORIGINAL RESEARCH ARTICLE

MicroRNA-195 rescues the impaired MS-dCA1 neural circuit and spatial memory in rats with chronic cerebral hypoperfusion

Supplementary File

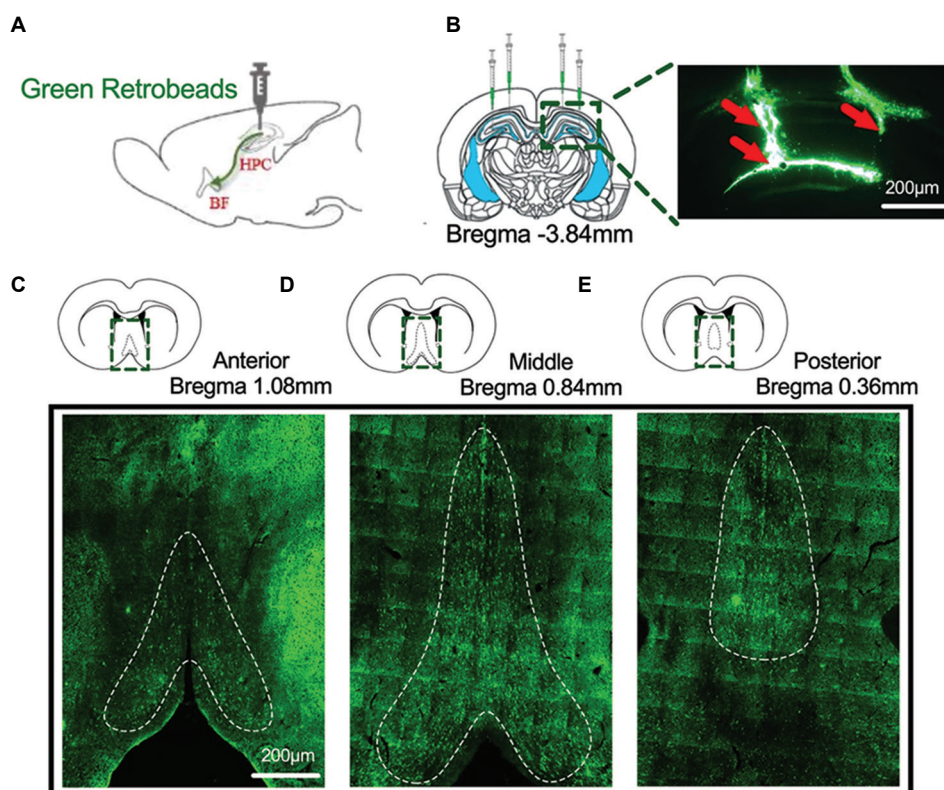


Figure S1. Green retrobeads labeled the neurons projecting from MS area to hippocampus. (A) Representation of the injection of green retrobeads into the dorsal hippocampus. (B) Immunostaining of hippocampus brain slice. The red arrows are the injection sites of green retrobeads. (C-E) Expression of retro-label neurons in MS area. Scale bar = 200 μm.

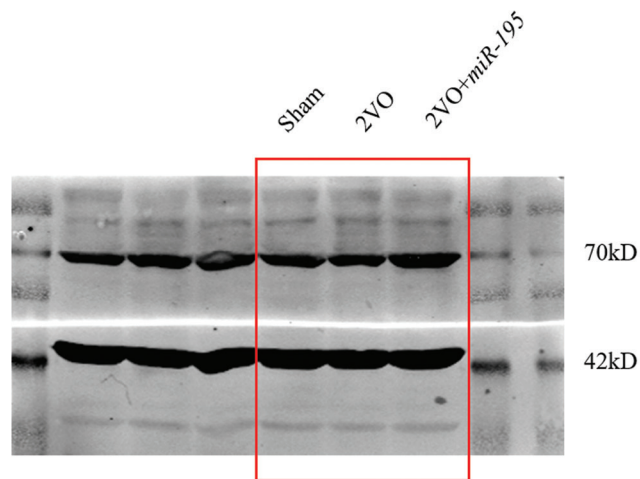


Figure S2. Raw image of Western blot for Figure 6F.