

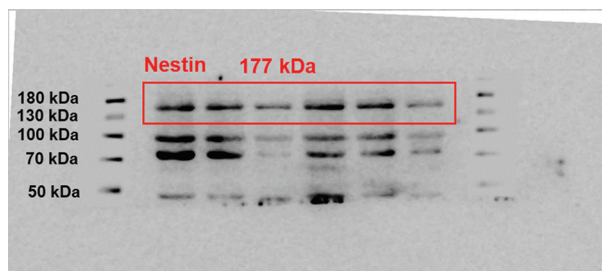
ORIGINAL RESEARCH ARTICLE

Tracking of transplanted neural stem cells labeled with superparamagnetic iron oxide in ischemic stroke

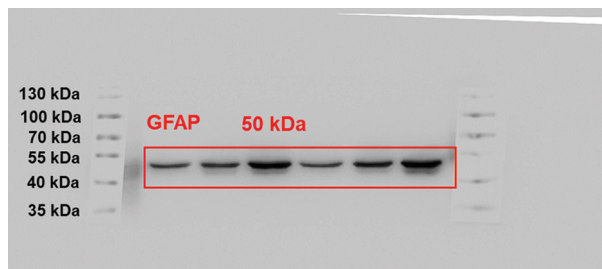
Raw image file

Raw images of Western blot shown in Figure 2A:

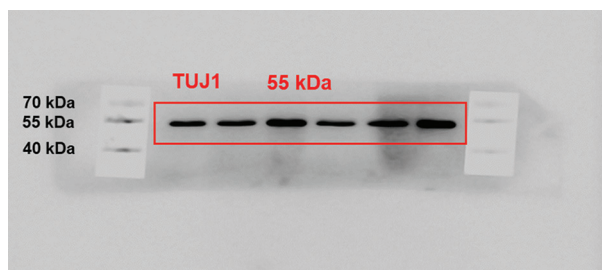
1. Western blot raw image of Nestin



2. Western blot raw image of glial fibrillary acidic protein



3. Western blot raw image of TUJ1



4. Western blot raw image of β -actin

