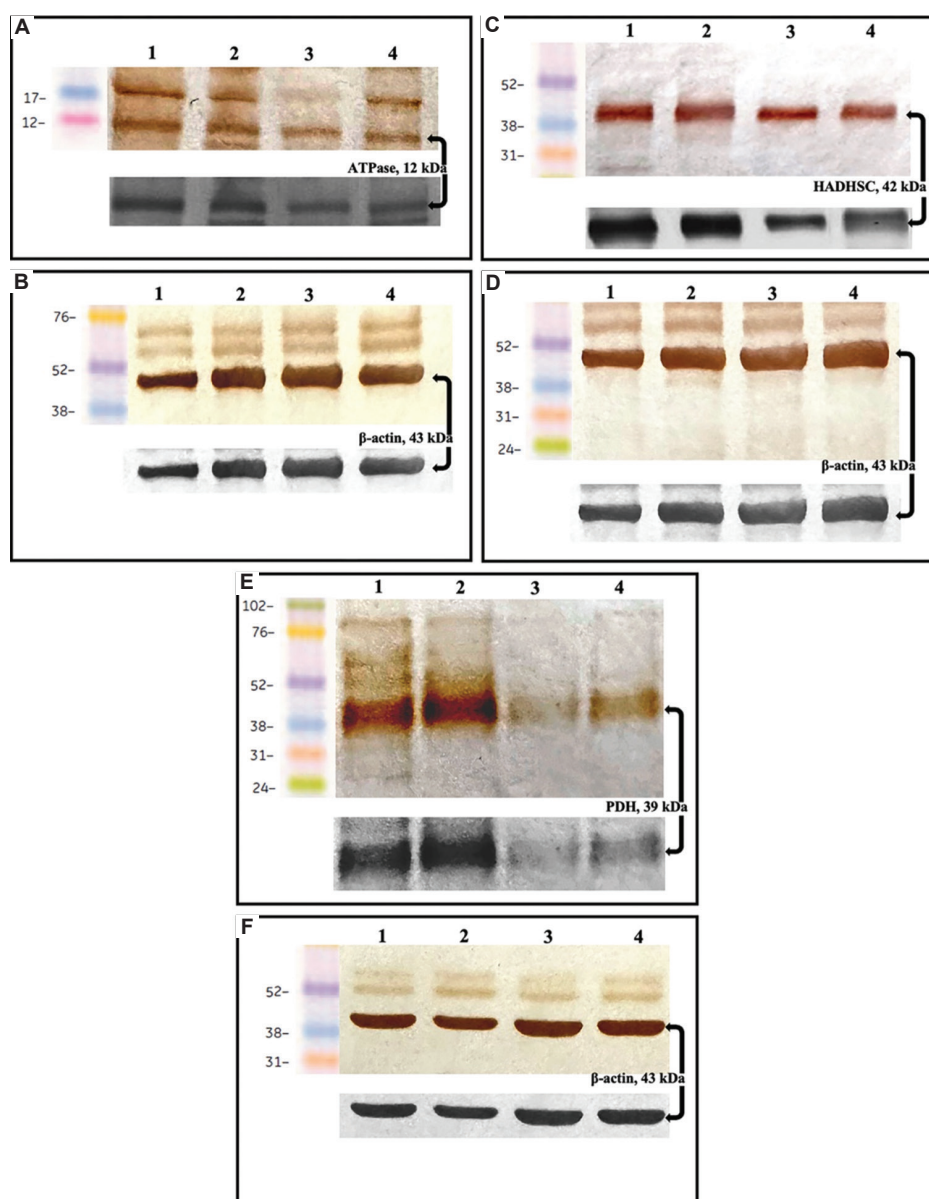


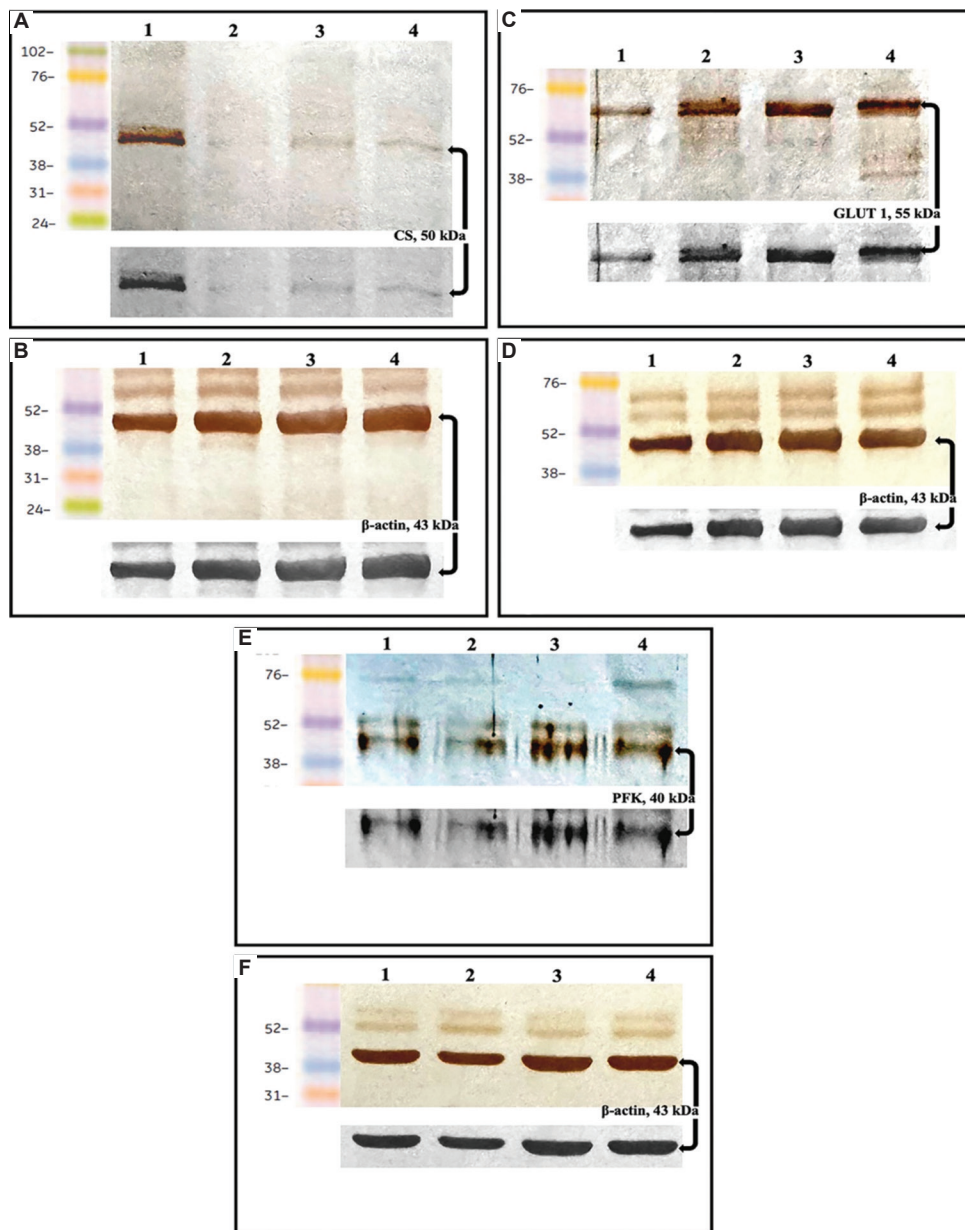
ORIGINAL RESEARCH ARTICLE

Profiling energy metabolism in normal bladder tissue and non-muscle-invasive bladder cancer cases of different histological grades

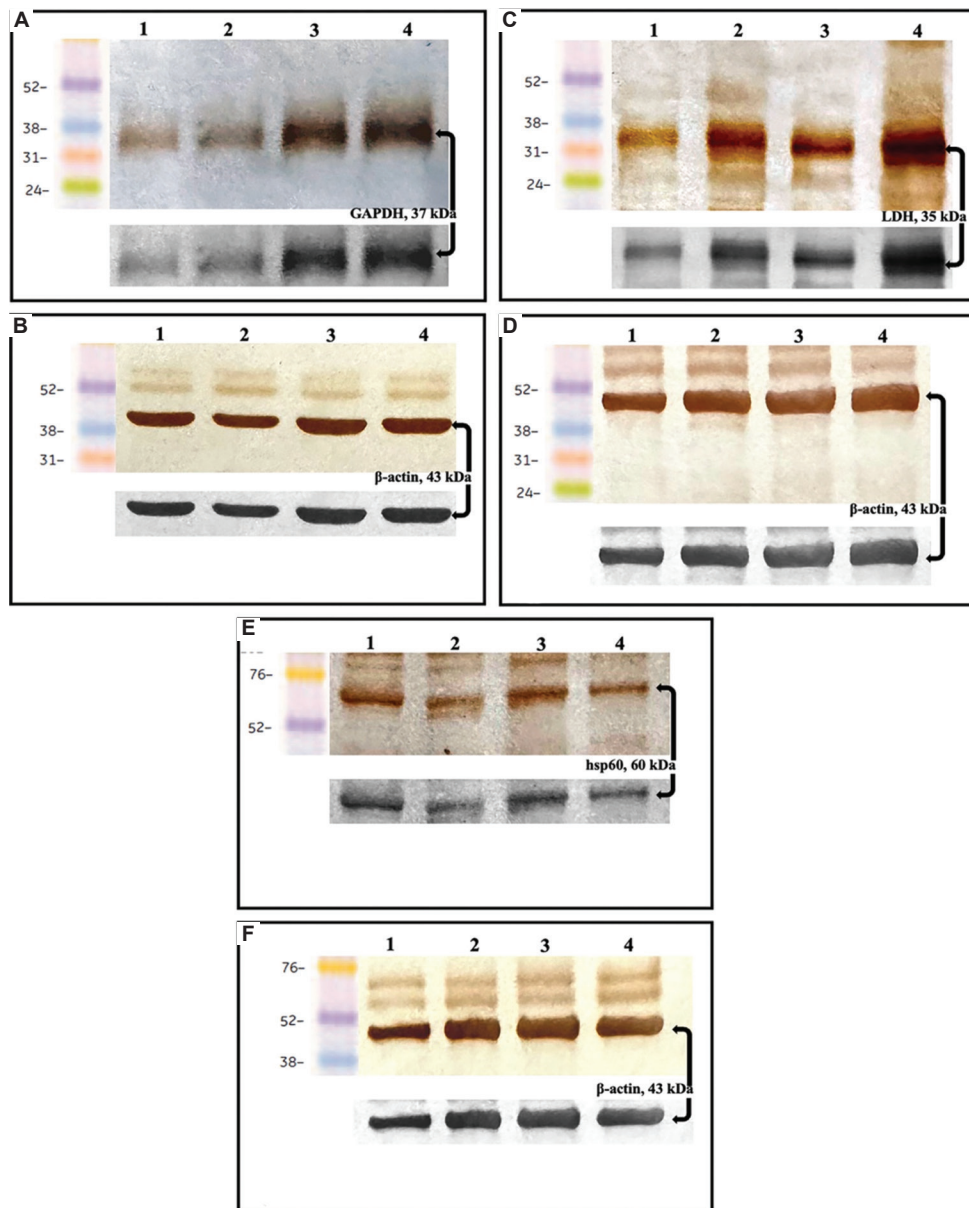
Raw Image File



**Figure R1.** Original images for Western blots for  $\beta$ -F1-ATP synthase (ATPase), HADHSC, PDH, and  $\beta$ -actin, as shown in Figure 4. (A) Western blot for ATPase (12 kDa); (B) Western blot for  $\beta$ -actin (43 kDa); (C) Western blot for HADHSC (42 kDa); (D) Western blot for  $\beta$ -actin (43 kDa); (E) Western blot for PDH (39 kDa); and (F) Western blot for  $\beta$ -actin (43 kDa). Codes for groups: 1, normal; 2, low-grade pTa; 3, high-grade pTa; 4, high-grade pT1. Abbreviations: ATP: Adenosine triphosphate; HADHSC: Short chain 3-hydroxyacyl-CoA dehydrogenase; PDH: Pyruvate dehydrogenase.



**Figure R2.** Original images for Western blots for CS, GLUT 1, PFK, and β-actin as shown in Figure 4. (A) Western blot for CS (50 kDa); (B) Western blot for β-actin (43 kDa); (C) Western blot for GLUT 1 (55 kDa); (D) Western blot for β-actin (43 kDa); (E) Western blot for PFK (40 kDa); (F) Western blot for β-actin (43 kDa). Codes for groups: 1, normal; 2, low-grade pTa; 3, high-grade pTa; 4, high-grade pT1. Abbreviations: GLUT1: Glucose transporter-1; PFK: Phosphofructokinase; CS: Citrate synthase.



**Figure R3.** Original images for Western blots for GAPDH, LDH, hsp60, and β-actin as shown in Figure 6. (A) Western blot for GAPDH (37 kDa); (B) Western blot for β-actin (43 kDa); (C) Western blot for LDH (35 kDa); (D) Western blot for β-actin (43 kDa); (E) Western blot for hsp60 (60 kDa); (F) Western blot for β-actin (43 kDa). Codes for groups: 1, normal; 2, low-grade pTa; 3, high-grade pTa; 4, high-grade pT1. Abbreviations: GAPDH: Glyceraldehyde 3-phosphate dehydrogenase; LDH: Lactate dehydrogenase; hsp60: Heat shock protein 60.