

ORIGINAL RESEARCH ARTICLE

Matrix metalloproteinase-1 as a potential biomarker for early gastric cancer detection and its effect on gastric cancer cell proliferation and migration

Raw Image File

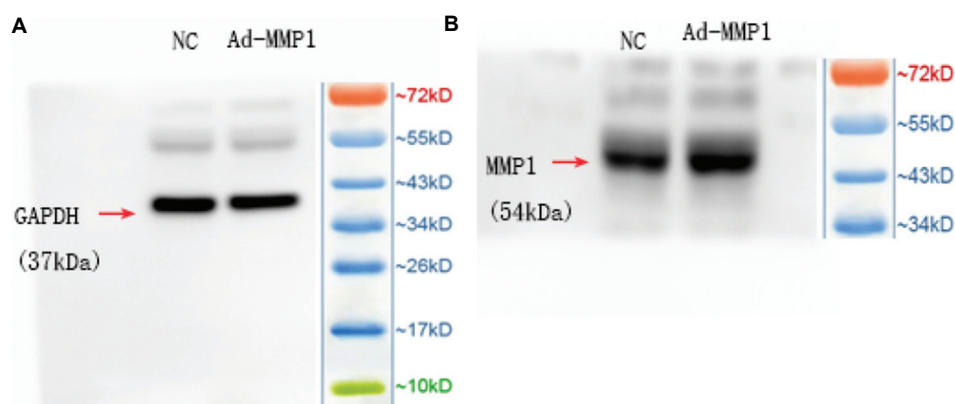


Figure R1. Original images for western blotting for GAPDH and MMP1 in Figure 3: (A) Western blotting for GAPDH (37 kDa); (B) Western blotting for MMP1 (54 kDa).

Abbreviations: MMP-1: Matrix metalloproteinase-1.

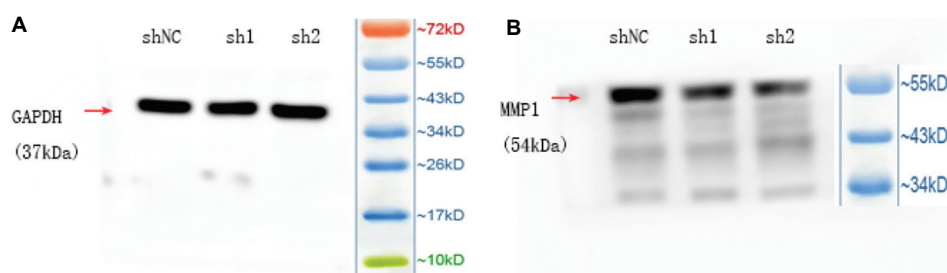


Figure R2. Original images for western blotting for GAPDH and MMP1 in Figure 4: (A) Western blotting for GAPDH (37 kDa) and (B) western blotting for MMP1 (54 kDa).

Abbreviations: MMP-1: Matrix metalloproteinase-1.

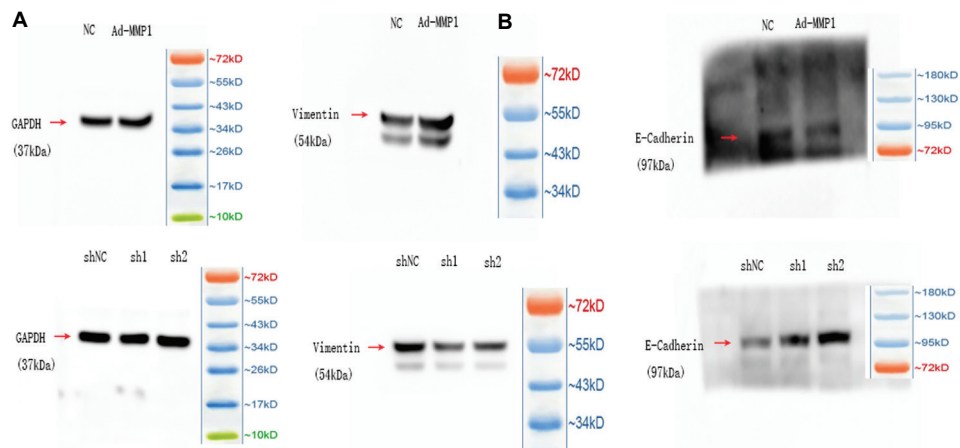


Figure R3. Original images for Western blotting for GAPDH, vimentin and E-cadherin in Figure 6: (A) Western blotting for GAPDH (37 kDa); (B) western blotting for vimentin (54 kDa); (C) western blotting for E-cadherin (97 kDa); (D) western blotting for GAPDH (37 kDa); (E) western blotting for vimentin (54 kDa); and (F) western blotting for E-cadherin (97 kDa). Abbreviations: MMP-1: Matrix metalloproteinase-1.