

ORIGINAL RESEARCH ARTICLE

Distinct behavioral effects of short-term voluntary running in phosphatase and tensin homolog deleted on chromosome 10 neuronal haploinsufficient mice

Raw Image File

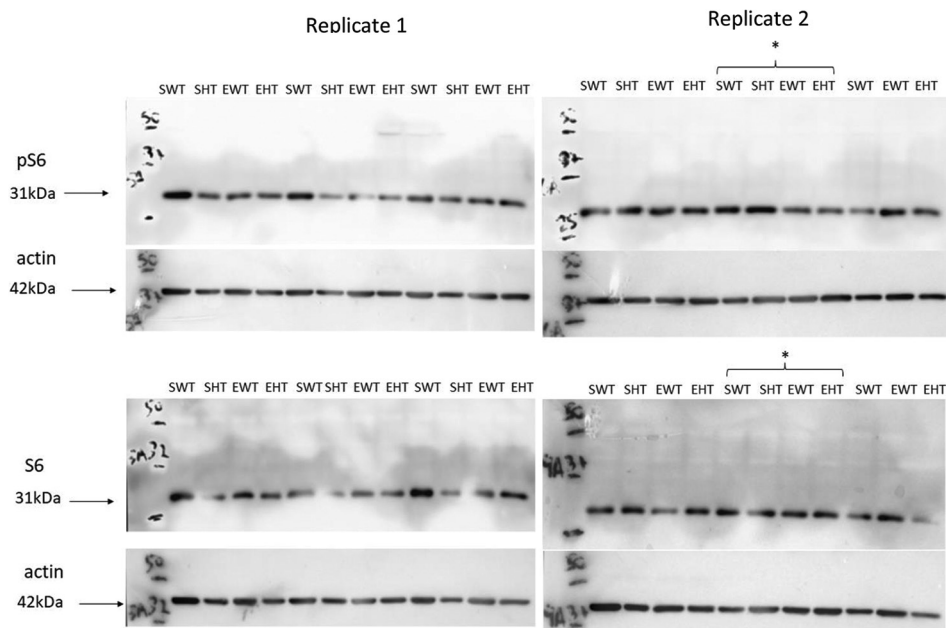


Figure S1. Full western blotting membranes for pS6, S6, and β -actin in Figure 6J. The approximate position of pS6 (31 kDa), S6 (31 kDa), and β -actin (42 kDa) are shown. Sample names with * are presented in the manuscript.

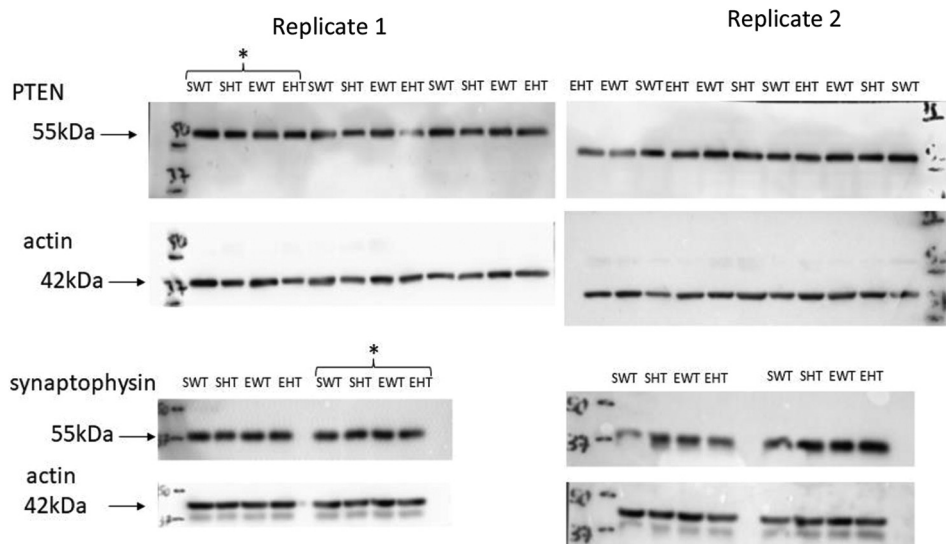


Figure S2. Full western blotting membranes for PTEN, synaptophysin, and β -actin in Figure 6J. The approximate position of PTEN (55 kDa), synaptophysin (55 kDa), and β -actin (42 kDa). Samples with * are presented in the manuscript.

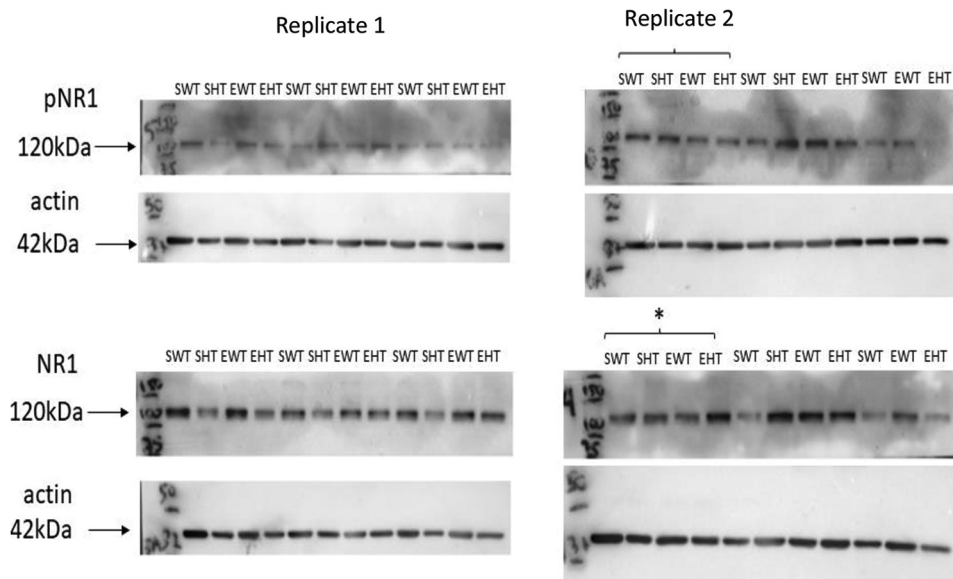


Figure S3. Full western blotting membranes for pNR1, NR1, and β -actin proteins in Figure 6J. The approximate position of pNR1 (120 kDa), NR1 (120 kDa), and β -actin (42 kDa). Samples with * are presented in the manuscript.

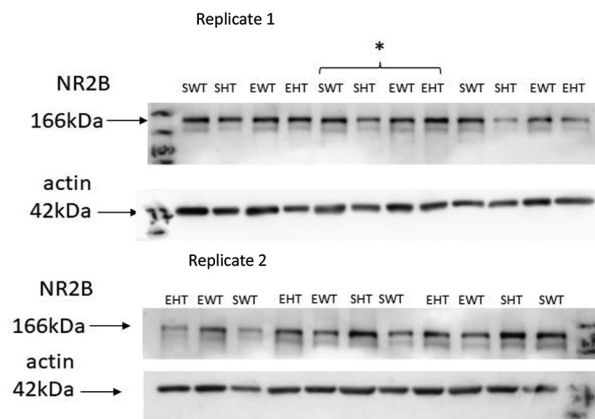


Figure S4. Full western blotting membranes for NR2B and β -actin proteins in Figure 6J. The approximate position of NR2B (166kDa) and β -actin (42kDa). Samples with * are presented in the manuscript.

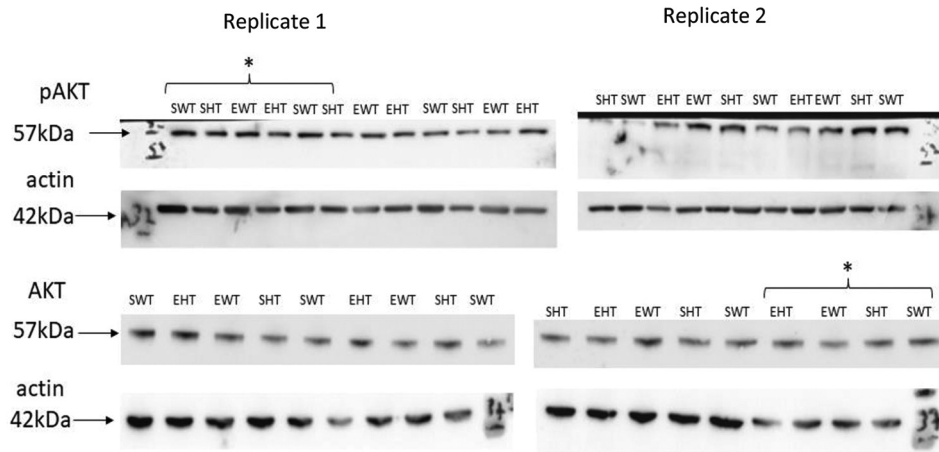


Figure S5. Full western blotting membranes for pAKT, AKT, and β -actin proteins in Figure 6J. The approximate position of pAKT (57kDa), AKT (57kDa), and β -actin (42kDa). Samples with * are presented in the manuscript.