

RESEARCH ARTICLE

Strontium-doped calcium silicate scaffolds with enhanced mechanical properties and tunable biodegradability fabricated by vat photopolymerization

Supplementary File

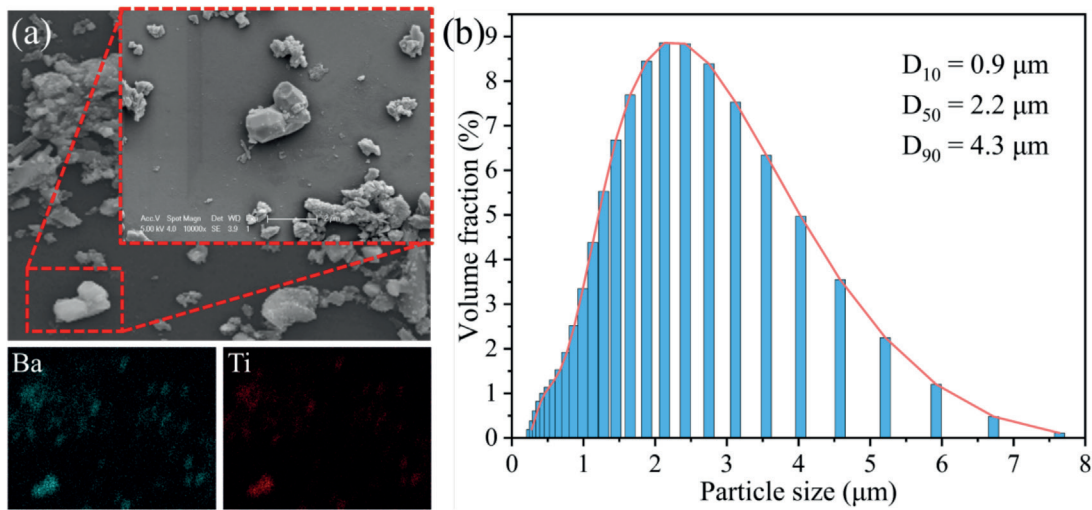


Figure 1. (a) Micromorphology and (b) particle size distribution of BTA powder.

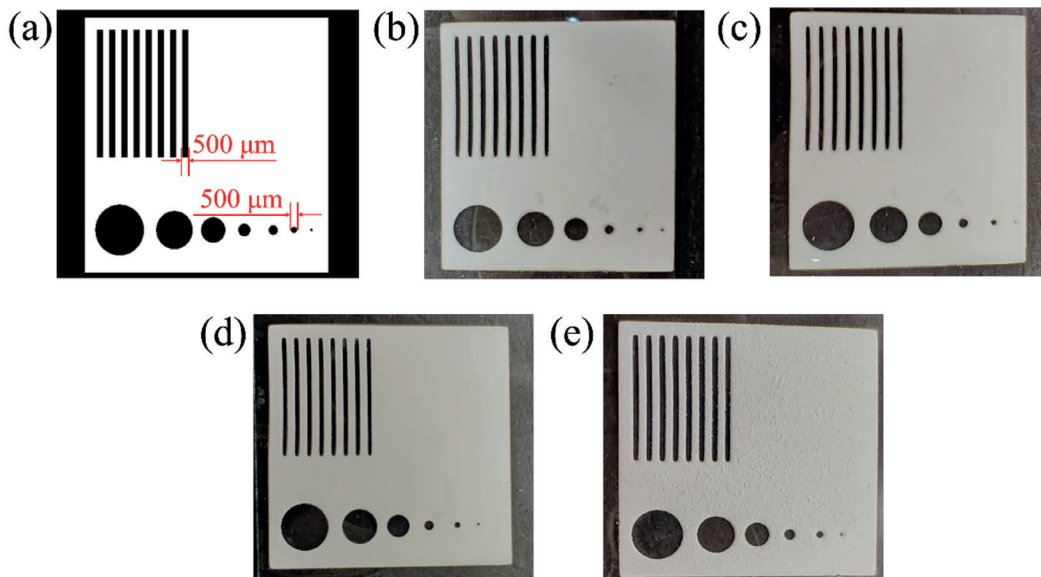


Figure 2. (a) Accuracy test model. The accuracy test sample fabricated by SrCS composite suspension with selected exposure energy. (b) SrCS, 9 mJ/cm². (c) SrCS-20BTA, 20 mJ/cm². (d) SrCS-30BTA, 28 mJ/cm². (e) SrCS-40BTA, 32 mJ/cm².

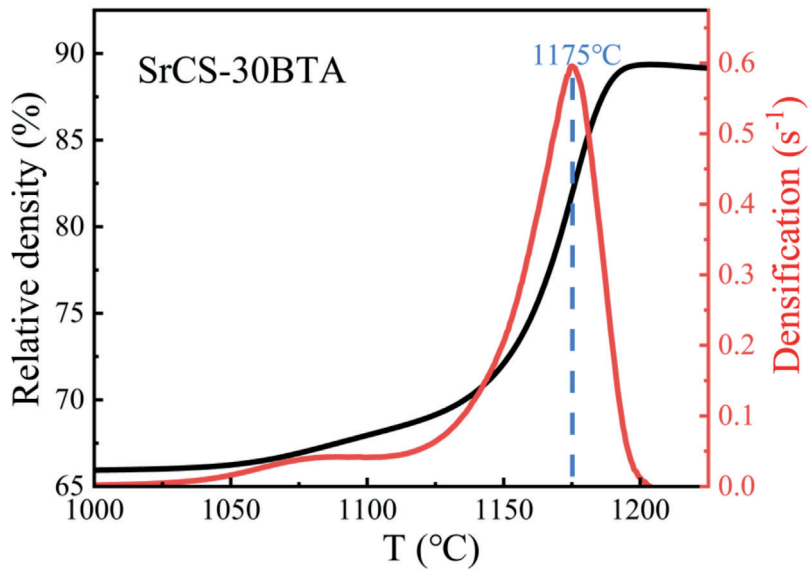


Figure 3. Relative density densification curve of SrCS-30BTA.

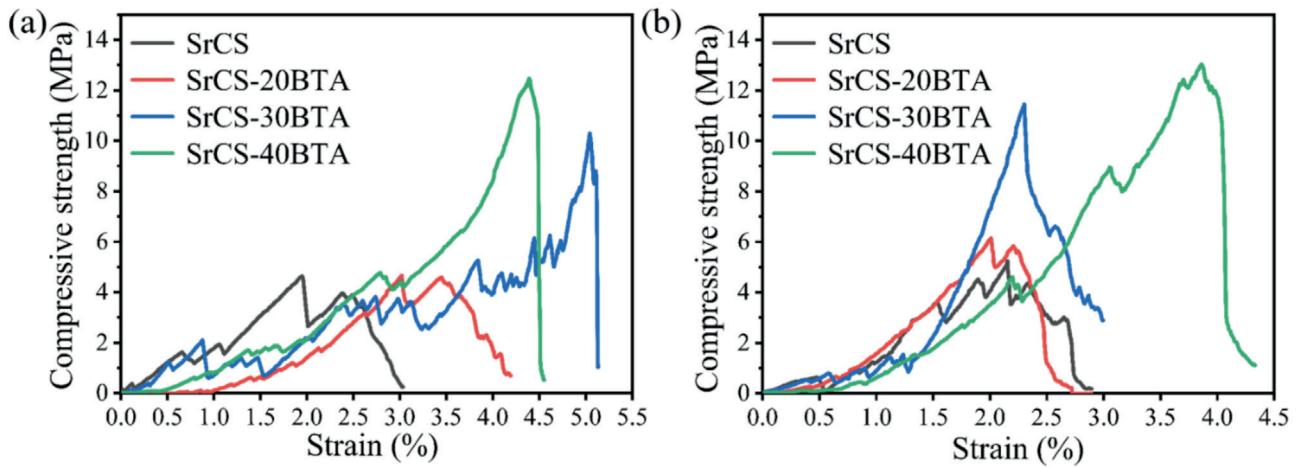


Figure 4. Compressive stress–strain curves of the SrCS-BTA scaffolds after soaking for (a) 4 days and (b) 7 days.