

RESEARCH ARTICLE

Melt electrospinning writing PCL scaffolds after alkaline modification with outstanding cytocompatibility and osteoinduction

Supplementary File

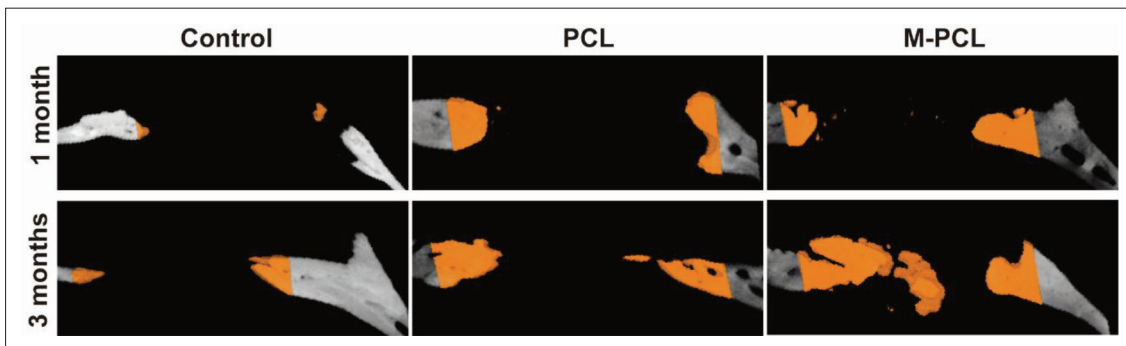


Figure S1. Coronal images of PCL scaffolds.

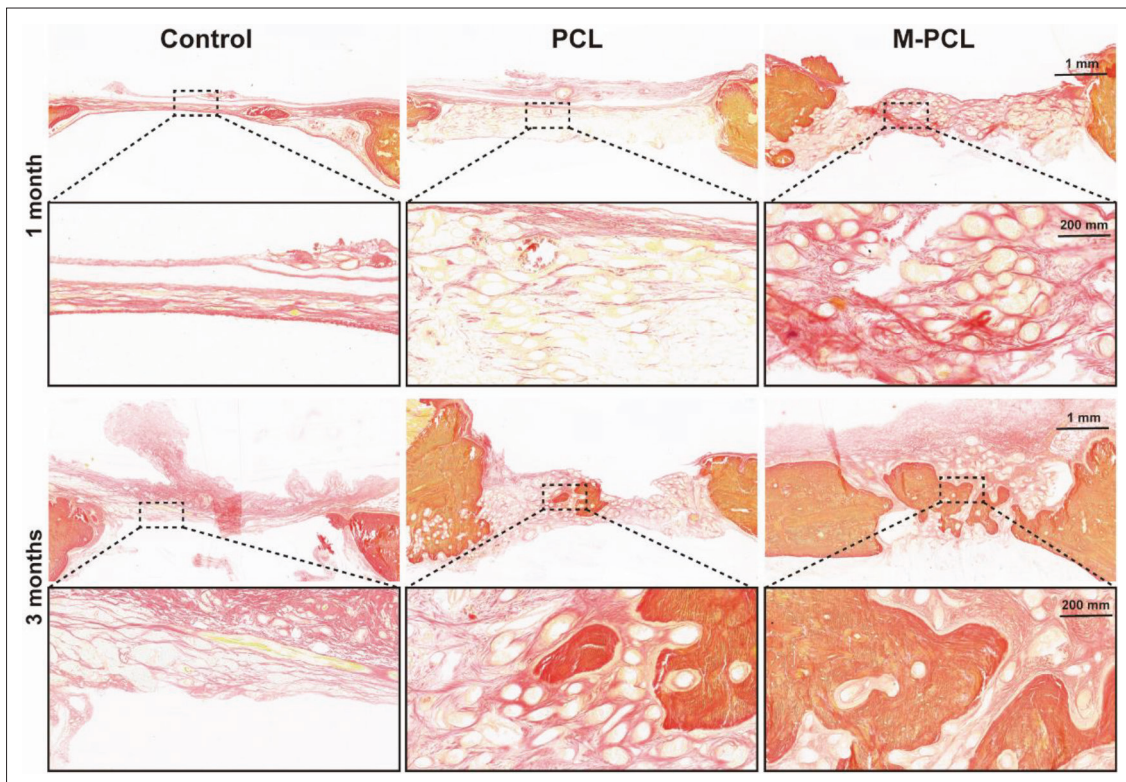


Figure S2. van Gieson staining of the undecalcified sections.

Table S1. The primers used in this study

Gene	Forward primer (5' to 3')	Reverse primer (5' to 3')
Runx2	GAACCAAGAAGGCACAGACAGA	CGGGACACCTACTCTCATACTG
Col1	AGCAGATTGAGAACATCCGCA	TTCTTCTCCTTGGGGTTGGG
Opn	AGAAACTCTTCCAAGCAACTCCA	TTCGTCAGATTTCATCCGAGTTCA
Gadph	CAAGTTCAACGGCACAGTCAAG	CGCCAGTAGACTCCACGACATA

Table S2. Details of primary and secondary antibodies

Name	Dilution	Supplier	Catalog no.
Integrin α 2	1:1000	Affinity	DF2540
Integrin β 2	1:1000	Affinity	AF5379
PI3K	1:1000	Abmart	T40064
p-PI3K	1:1000	Abmart	T40116
Akt	1:1000	CST	4691
p-Akt	1:1000	CST	4060
OPN	1:1000	PTGCN	22952-1-AP
Runx2	1:1000	PTGCN	20700-1-AP
GAPDH	1:5000	PTGCN	11-7423-82
HRP-goat anti-rabbit IgG (H+L)	1:5000	PTGCN	SA00001-2